

WIRELESS DOT PEEN MARKING SYSTEM

e-mark XL



+ ULTRA COMPACT

- Handy and balanced
- Ergonomic handle
- Lightweight (3,6 kg - 6.6 lbs)
- Transport suitcase
- Marking window 120 x 40 mm - 4.7 x 1.6 in

+ HIGH-PERFORMANCE

- Marking on all types of material and difficult surface conditions
- Precise and accurate guides
- Marking speed and power
- Marking hard parts up to 60 HRC

+ ROBUST AND RELIABLE

- Light and robust cast aluminium body and handle

+ INTUITIVE

- Simplified navigation software
- Color screen

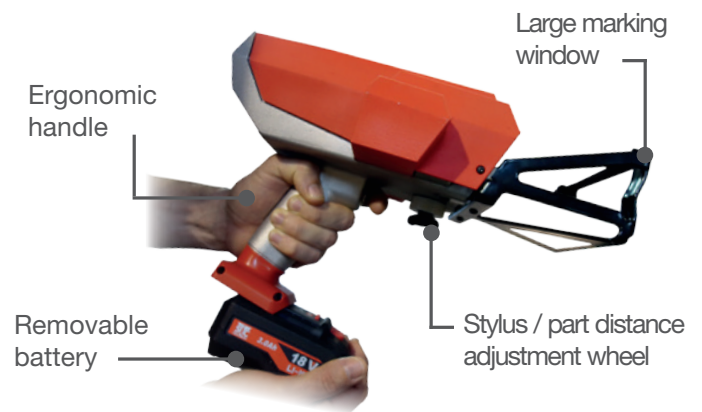


FULL PACKAGE



- + 2 batteries 18v Li-ion + charger
- + Transport suitcase
- + Maintenance kit

E-MARK XL CHARACTERISTICS



DOT PEEN MARKING EXAMPLES



TECHNICAL & MECHANICAL FEATURES

| e-mark XL | |
|-----------------------|--|
| Marking window | 120 x 40 mm - 4.7 x 1.6 in |
| External dimensions | 330 x 254 x 270 mm - 13 x 10 x 10.6 in |
| Weight | 3,6 kg - 6.6 lbs |
| Stylus | Tungsten carbide |
| Positioning aid | Position memory |
| Operating life | From 1h (intensive use) to one day in normal use |
| Battery charging time | 1h |



OPTIONS



Maintenance kit



Custom front plates



Wireless barcode reader



Datamatrix reader

Please consult us if a specific configuration is not published in the table attached.

SIC Marking designs customized and turnkey solutions for all industrial sectors. Our design offices produce machines in compliance with your specifications and your industrial standards.

E1 CONTROL UNIT

The e1 controller

- USB port (allows you to easily transfer your marking files)
- Fully programmable
- Small size
- Marking diversity (DataMatrix, circular, alphanumeric, logos ...)
- Membrane protected industrial keyboard



+ Ergonomic handle



+ USB Port



+ Color screen



+ Transport suitcase



Technical & electronic features

| e1 controller | |
|---------------------|---|
| LCD screen | HD color, 70 x 54 mm - 2.7 x 2.1 in |
| Keyboard | 49 keys, membrane protection |
| Power | 100 Watt |
| Power supply | 18V / 3A |
| Communication ports | USB |
| Inputs-outputs | Jack socket |
| PC software | Creation, backup and transfer of logo files |



APPLICATIONS



E1 RANGE SOFTWARE

Software features

| | |
|-------------------------|--|
| Memory | >100 Mo |
| Variable | Alphanumeric, incrementation, timestamp, barcode |
| Logos | Download from a PC or USB key |
| Fonts | Arial, Comic, Comic_B, Courier, OCR, OCR_BOLD, OCRA, 4x6 |
| Style | Angular, radiant, linear, radial, datamatrix, logo |
| Character Size | From 1 mm to 40 mm (limited following marking window) |
| Impact Force | 9 adjustable levels |
| Depth | Up to 0,3 mm (according to the material) |
| Resolution Between Dots | 0,05 mm MAX |
| Password | 2 security levels |

Icon programming Graphic View



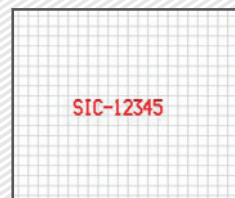
- + Ergonomics and quick programming
- + History function with anti-duplicate
- + Automatic or semi-automatic mode using barcode reading



 Angular marking



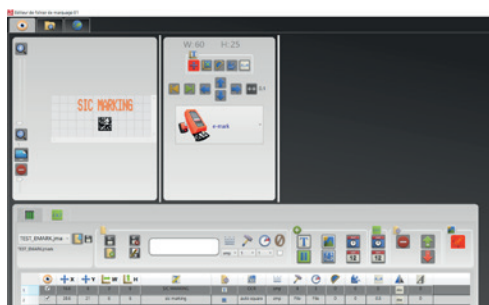
 Radiant marking



 Text or increment

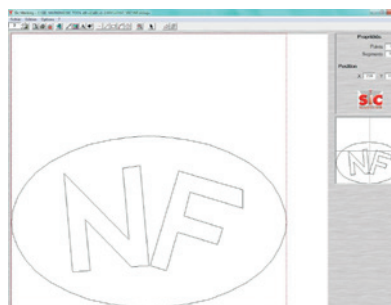
PC UTILITIES

File editor



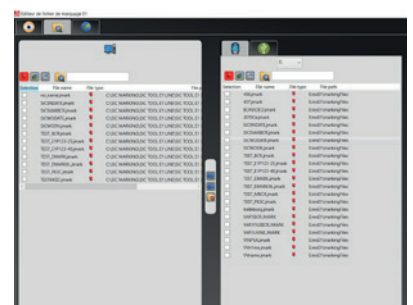
- + Creation or modification of files on PC.

Creation of logos



- + Creation of vector and matrix logos.

File manager



- + Backup and transfer of files (by USB key or by USB link).